

Updates on Building the Primary Care Workforce in Oklahoma: the Mobile Outreach Vehicle, Telemedicine Training, and Premier Medical Education Hubs

Oklahoma Academy of Family Physicians

Annual Scientific Assembly

August 27, 2022



Host and Panelists

- Host: **Frances Wen, PhD**, Professor, Director of Research, Founders of Doctors' Hospital Endowed Research Chair in Family Medicine, Department of Family and Community Medicine, School of Community Medicine, Tulsa
- Panelist: **Margaret Robinson, MEd**, Associate Director Office of Interdisciplinary Programs, Office of the Vice Provost for Academic Affairs & Faculty Development, University of Oklahoma Health Sciences Center, Oklahoma City
- Panelist: **Blake Lesselroth, MD, MBI, FACP, FAMIA**, Vice Chair and Associate Professor, Department of Medical Informatics, Adjunct Associate Professor and Teaching Hospitalist, Department of Internal Medicine, School of Community Medicine, Tulsa
- Panelist: **Karla Finnell, JD, PhD**, Assistant Professor, Department of Health Promotion Sciences, Hudson College of Public Health, University of Oklahoma Health Sciences Center, Oklahoma City
- Panelist: **Karen Ortiz, MPH**, Research Coordinator, Department of Family and Preventive Medicine, College of Medicine, University of Oklahoma Health Sciences Center, Oklahoma City



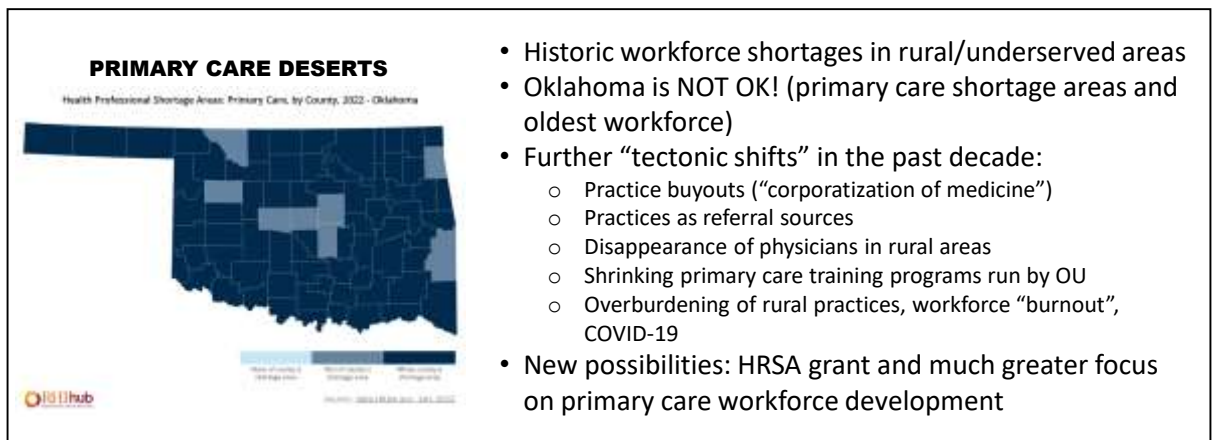
Learning Objectives

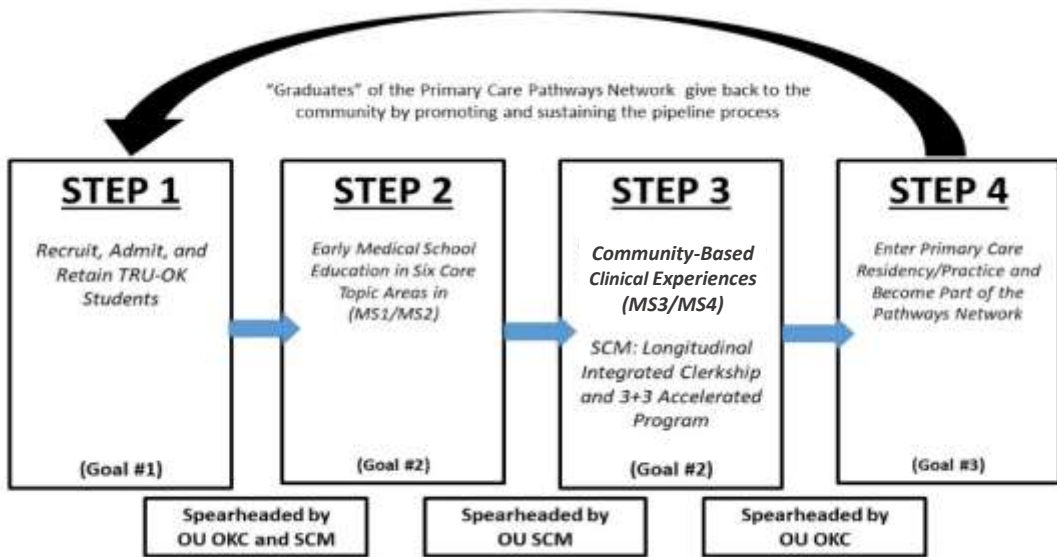
Upon completion of this presentation, participants will be able to:

- Describe at least one initiative to build the primary care workforce in Oklahoma
- State the relevance of competency-based telemedicine training to the building of the primary care workforce
- Identify at least one opportunity to support student interest in primary care



Primary Care Workforce Issues (Frances Wen, PhD)





Margaret Robinson, MEd – Outreach and Recruitment

- What is the approach to engaging in outreach and recruitment to youth and students from Tribal, Rural and Underserved communities in Oklahoma (TRU-OK)?
- What roles and benefits are there for community partners?
- What do you have planned on the horizon?





Mobile Classroom

- Purposeful travel and meaningful engagement with TRU-OK communities
- Health education and lifestyle wellness courses
- Mentorship opportunities for prospective K-20 applicants
- Engagement with home communities for TRU-OK admitted students
- Cultivate relationships with local agencies
- Unique HRSA contribution, addresses Academic Strategic Plan pipeline



Mobile Outreach

- Contributes to accreditation goals, builds IPE capacity
- Experiential outreach for mentorship of applicants and method for TRU-OK pipeline students to retain a connection with their community
- Increase access to care using mobile outreach equipment and/or telecommunication connections with TRU-OK communities
- Inspire students to consider primary care in rural communities

Afghan Refugee Outreach





Cole Community Center



OKC Public Schools Health Fair 8/13/22



Jackson County Memorial Hospital



Join Us For A Ribbon Cutting

Thursday, September 8, 2022 from 10 a.m. - Noon
 Bird Library, 1105 North Stonewall Avenue | OU Health Sciences Center Campus

Join the OU Health Sciences Center campus community for a ribbon cutting of our new mobile outreach vehicle – Health Sciences Explorer. This vehicle is designed to provide educational and community health outreach with hands-on activities.

We're excited to introduce communities across the state to a wide variety of health professions, all which can uniquely be found at the OU Health Sciences Center's seven colleges.

The celebration will include a media briefing, ribbon cutting, tours and activities as well as a reception at the Bird Library on campus located at 1105 North Stonewall Avenue on our campus.

For more information or questions, please visit explorer.ouhsc.edu or email explorer@ouhsc.edu.



COLLEGE OF MEDICINE
 IN THE UNIVERSITY OF OKLAHOMA HEALTH SCIENCES CENTER

Blake Lesselroth, MD – Telemedicine Training Program

- What competencies are important in telemedicine?
- What teaching method is the SCM using?
- What are the core skills needed in students – and in the primary care workforce?



AAMC Telemedicine Competencies 2021



Telehealth Competencies Across the Learning Continuum



PATIENT SAFETY & APPROPRIATE USE



ACCESS & EQUITY



COMMUNICATION



TECHNOLOGY FOR TELEHEALTH



ETHICAL PRACTICES & LEGAL REQUIREMENTS

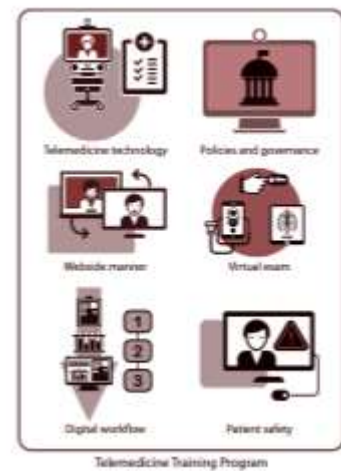


DATA COLLECTION & ASSESSMENT

OU School of Community Medicine

TTP-AAMC Core Competencies

Item	Domain	Competency
I 2a	Patient safety	Incorporates telehealth into encounters
I 4a	Patient safety	Describes when safety is at risk
II 2a	Access and equity	Define how telehealth affects health equity
III 1a	Communication	Develop an effective rapport
III 2a	Communication	Assess the environment
IV 1a	Data collection	Obtains a history during an encounter
V 3a	Technology	Explains risk of technology failures
VI 3a	Ethics and law	Knowledge of ethical and professional requirements



Telemedicine Training Program (TTP)

The TRU-OK grant is supporting the design, piloting, and evaluation of a comprehensive telemedicine curriculum for undergraduate medication education.

The content is introduced throughout the year-long Health Systems Science in Practice (HSSP) course.



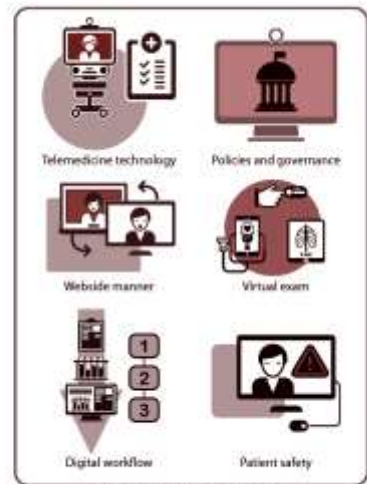
Health Systems Science in Practice (HSSP) Course for MS3 and PA2

+



Tribal Rural Underserved Oklahomans (TRU-OK) grant from HRSA

=



Telemedicine Training Program

Telemedicine Modules | Sims & Skills Labs



DIDACTICS

SIMULATIONS

EVALUATIONS

OU School of Community Medicine

TeleSims | TeleSkills Labs | TeleOSCEs



- A** Provided with standard scenario
- B** Attend to technology and bedside manner
- C** Encounter with standardized patient
- D** Evaluation of competencies

TeleSims

Hypertension
Tech Failure



Med Rec
Social Determinants



Interpersonal Violence
Interprofessional Teams



Depression
Patient Safety



ACES
Univ Comm Prec



Geriatrics
Workflow



TeleSkills Labs

ENT / Vitals
Peripherals



Musculoskeletal
Environment



Abdominal Exam
Peripherals



Skin Exam
Store and Forward

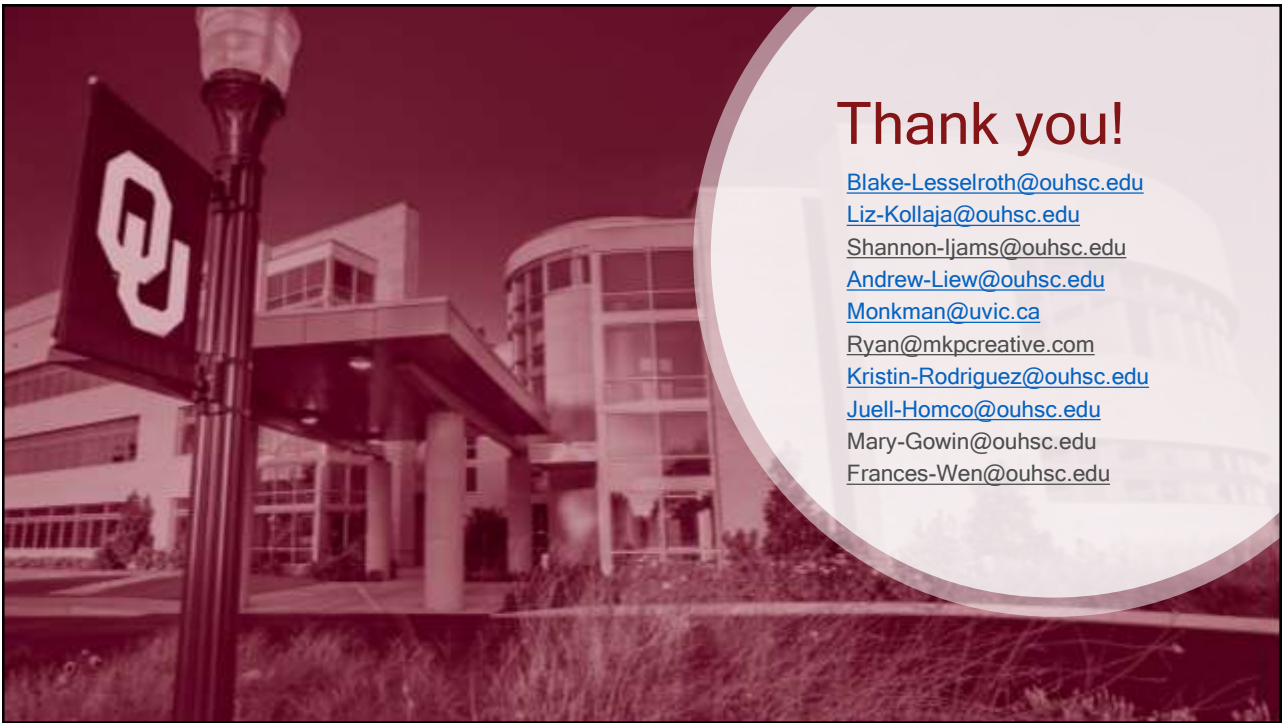


Cardiopulm
Telepresenters



Neuro Exam
Mobile Apps





Thank you!

Blake-Lesselroth@ouhsc.edu

Liz-Kollaja@ouhsc.edu

Shannon-ljams@ouhsc.edu

Andrew-Liew@ouhsc.edu

Monkman@uvic.ca

Ryan@mkpcreative.com

Kristin-Rodriguez@ouhsc.edu

Juell-Homco@ouhsc.edu

Mary-Gowin@ouhsc.edu

Frances-Wen@ouhsc.edu

Karla Finnell, PhD and Karen Ortiz, MA – Premier Education Medical Hub?

- What is a Premier Education Medical Hub?
- How is it different from a typical host site?
- Who are your partners? What makes them exemplary?
- What other tools or resources are available to support sites new to Precepting?
- How is the model being received by students?



Panelists: Building the Primary Care Workforce

- How do your efforts in outreach, recruitment, and/or expanding clinical education contribute to the primary care workforce?
- How do you create an environment that is conducive to growing the workforce?
- How can individual clinicians facilitate the primary care “pipeline”?
- How do people find out more information about your program or get involved?



Please raise your hand to ask a
question of a panelist
or
enter your question into the chat



For more information about precepting:

Contact:

Crystal Turner, Preceptor Network Coordinator at

crystal-turner@ouhsc.edu

Lindsay Owens, Student Program Coordinator at

lindsay-owens@ouhsc.edu

